

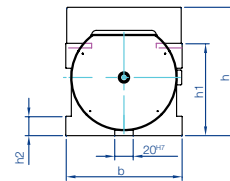
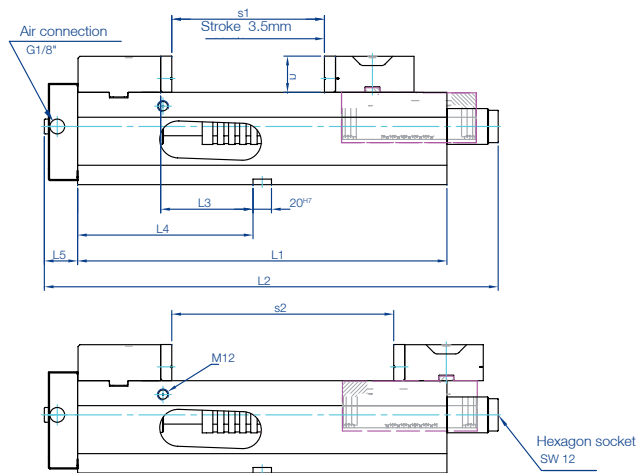
# Bull pneumatic

**Pneumatic high pressure vise with draw-in system and patented clamping range adjustment for serial parts. Effortless clamping.**

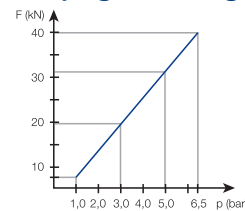
- > Automated pneumatic build-up of clamping force
- > With clamping force intensifier: max. 6.5 bar air pressure necessary
- > Dirt resistant encapsulated spindle, no thread in the chip area
- > Patented quick adjustment of the clamping range
- > Strong body of spheroidal graphite iron GJS-600
- > Compact design, constant length for machining centres
- > Large clamping range through use of step jaws
- > Step ledges for "clicking in"

## Scope of delivery:

4 clamping claws, 1 operating key



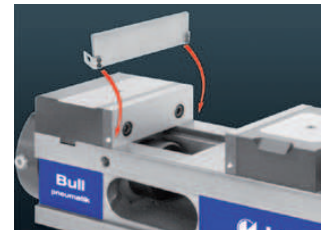
## Clamping force diagram



Size b	Order no.	Jaws	max. clamping force kN	max. compressed air bar	Clamping range		Weight kg
					s1	s2	
125	04.25.153.001.9	Block jaws	40	6,5	0-165	80-240	35
125	04.25.153.0003	Step jaws	40	6,5	3-270 with additional jaws	100-345	35

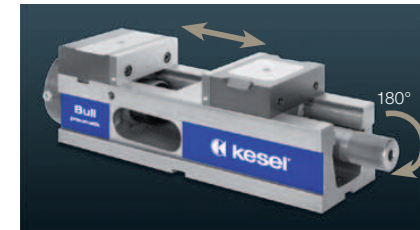
  

Size b	L1	L2	L3	L4	L5	h	h1 ±0,01	h2
125	400	494	88	190	36	140	100	21



## Step ledge quick release system

- > Step ledges are simply "clicked" in by hand, with no need for tools
- > No penetration of chips beneath the step ledge
- > Secure and stable hold, also with the use of compressed air
- > Available in a range of heights (accessories)



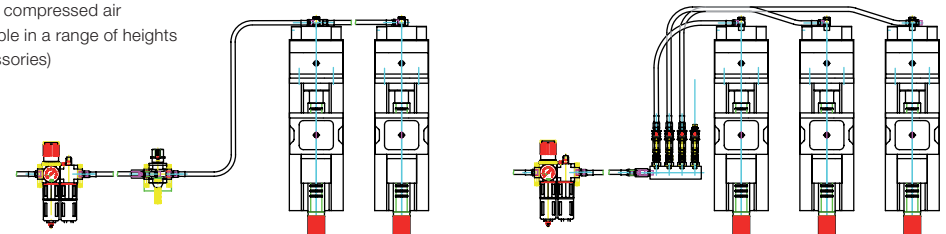
## Quick adjustment of the clamping range

- > By rotating the spindle 180° it is possible to adjust the clamping range very quickly



## With step jaws

- > Clamping range 3-345 mm



Example applications:  
2 x Bull pneumatic clamping simultaneously

3 x Bull pneumatic clamping individually

## BULL Pneumatic accessories



**Maintenance unit** for an oiled compressed air and adjusting the clamping force

Order no.	Thread
01.25.153.110.9	G 1/8"



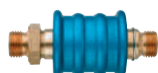
**Foot valve**

Order no.	Thread
33.21.032.007.9	G 1/4"



**Magnet valve**

Order no.	Thread
33.40.428.029.9	G 1/4"



**Manual slide valve**  
Manual sliding 3/2 way valve

Order no.	Thread
01.25.153.113.9	G 1/8"



**Check valve**

Order no.	Thread
33.11.032.012.9	G 1/8"



**Check valve lockable**

Order no.	Thread
33.21.032.009.9	G 1/8"



**Rotary knob on-off valve** with threaded connection plate. Design as 3/2 way valve, manually actuated

Order no.
01.25.153.114.9



**Quick exhaust valve**

Order no.	Thread
33.11.032.007.9	G 1/8"



**Quick release coupling** Coupling connector and coupling socket for quick set-up

Order no.	Thread
01.25.153.115.9	G 1/8"



**L-threaded connection** with internal thread, aluminium blue anodised, pivoting, incl. 2 PVC sealing rings

Order no.	Thread
01.25.153.111.9	G 1/8"



**T-threaded connection** with internal thread, aluminium blue anodised, pivoting, incl. 2 PVC sealing rings

Order no.	Thread
01.25.153.112.9	G 1/8"



**Double threaded nipple and sleeve**

Order no.	Thread
01.25.153.116.9	G 1/8"



**Reduction nipple** Threaded connection, internal G 1/8" external G 1/4"

Order no.
33.40.428.003.9



**High pressure hose** with NW 4 mm, with brass connection both sides, G 1/8", metallic gauze sheath for protection against hot chips in the working area

Order no.	Diameter
01.25.153.101.9	0,3 m
01.25.153.102.9	0,5 m
01.25.153.103.9	1,0 m
01.25.153.104.9	2,0 m



**Distributor strip** Threaded connection, internal G 1/4" external G 1/8"

Order no.
33.30.015.003.9

## BULL Pneumatic accessories



**Smooth clamping jaw hardened**, ground, standard equipment



**Smooth clamping jaw soft (1.2842)**, milled, for the fabrication of moulding jaws



**Clamping jaw with linear grooves** for firmly gripping the workpieces

Size	Order no. Smooth clamping jaw hardened	Height	Thick- ness
125	01.25.152.014.4	39,2	12
<b>Smooth clamping jaw soft</b>			
125	01.11.105.002.5	39,2	12
<b>Clamping jaw with linear grooves</b>			
125	01.11.105.001.5	39,2	12



**Smooth clamping jaw** with step, hardened and ground, for saving clamping supports

Size	Order no.	Step	Thick- ness	Height
125	01.11.105.003.5	3 x 6	12	39,2
125	01.11.105.008.5	5 x 10	12	39,2



**Clamping jaw with corrugation** hardened and ground

Size	Order no.	Height	Thick- ness	Gripper Order no.	Thread
125	01.26.160.035.3	40	12	01.26.160.048.4	M10



**Grip clamping jaw**, hardened, with step

Size	Order no.	Height	Thickness	Step
125	01.25.150.0002	40	12	3x3
160	01.25.260.0004	50	16	3x5

## BULL Pneumatic accessories



**Prism jaws with horizontal prism 120°**  
hardened and ground

Size I	Order no.	Height	Thick- ness	Clamping diameter	
				with 1 jaw	with 2 jaw
125	01.11.105.005.4	39,2	20	ø 9-50	ø 14-50



**Prism jaws with horizontal and vertical  
prism 90°** hardened and ground

Size I	Order no.	Height	Thick- ness	Clamping diameter	
				with 1 jaw	with 2 jaw
125	01.11.105.004.4	39,2	28	ø 15-42	ø 24-42



**Pendulum jaws** with smooth slide, hardened and ground,  
for clamping conical workpieces

Size	Order no.	Height	Thickness
125	04.13.125.150.9	39,2	43



**Pull-down jaws** smooth, the workpiece is hold securely, with a  
deep drawing effect

Size	Order no.	Height	Thickness
125	04.13.125.200.9	39,2	25



**Pull-down jaws for raw parts** with inset spring plate for  
clamping raw parts. The spring plate establish a secure hold and  
deep drawing effect

Size	Order no.	Height	Thickness
125	04.13.125.250.9	40	21

## BULL Pneumatic accessories



**Universal top jaws with angle adjustment  
possibility** hardened and ground

Size	Order no.	Height	Thickness
125	04.13.125.400.9	42	10



**Workpiece stop** adjustable

For size	Order no.	Thread
125	03.11.008.001.4	M 12



**Step ledges**

For size	Order no.	Height	Thickness
125	04.25.150.061	15	3
125	03.26.160.022.9	20	3
125	03.25.160.024.9	35	3
125	03.26.160.002.9	39	3



**Manual crank in shortened design** for use in place  
of the standard manual crank, if the throughput height to the  
machine table is too small

Size	Order no.	Length	Width
125-160	03.15.103.001.4	110	90